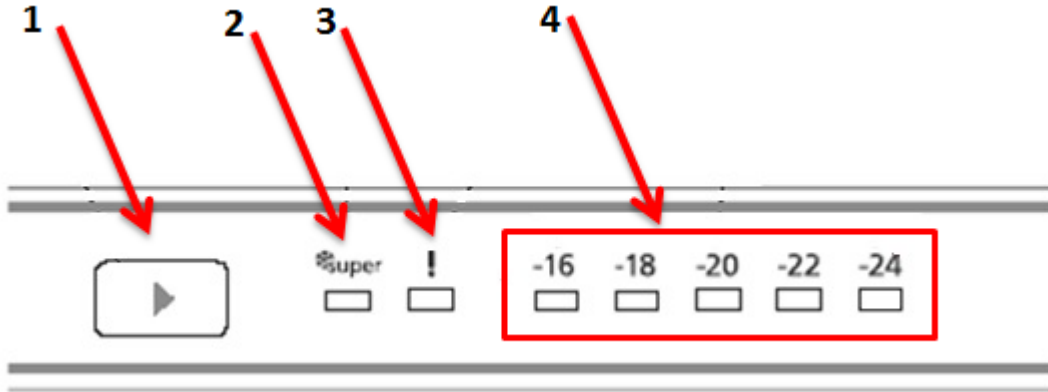


<b>VESTEL</b> WHITE GOODS	<b>2791 ELECTRONIC</b>	<b>CUSTOMER SUPPORT</b>
	Display and Control Panel	



1. It enables the setting value of fridge to be modified and super cool mode to be activated if desired. Freezer may be set to -16,-18,-20,-22,-24 °C, SF.
2. It is the Super Freeze mode symbol.
3. It is the alarm symbol.
4. It is the freezer set value screen.

### Super Freezing Mode :

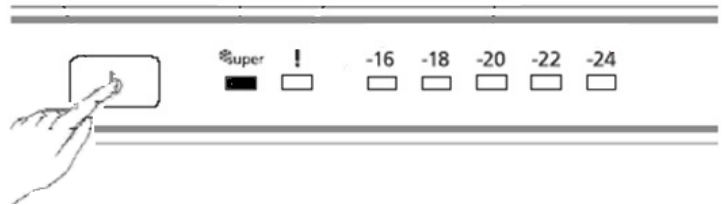
- To freeze plenty of food

#### How to use;

- Press set button until 'SUPER' led blink.

#### During this mode:

- Super freeze mode can be cancelled by the same operation of selecting.



### Demo mode :

This mode will be use for only sales points by salesman to show functions & modes to customer without operating components as a compressor, fan, motor..Etc

#### Entering Demo mode:

- Firstly the power is on , with in 1 minute set the temperature to "SUPER" and user will push "SET" button for 10 seconds , Then appliance will go on "demo function" and Super LED symbol will blink during the mode.
- All functions can be adjusted to show how they are adjusted to the customer.

#### Canceling Demo mode:

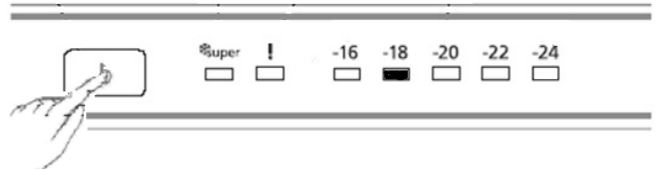
- For cancelling; Same operation will be used. If user will push SET button for 10 seconds, demo function will be cancelled.
- When appliance is Demo mode; if plug is removed or there is an electricity breakdown; demo mode will continue with current settings after user plug into or electricity breakdown finish.

<b>VESTEL</b> WHITE GOODS	<b>2791 ELECTRONIC</b>	<b>CUSTOMER          SUPPORT</b>
	Display and Control Panel	

### Temperature adjustment and activating SUPER COOLING Mode

Initial temperature value for Freezer Setting Indicator is -18 °C.

- Press set button once.
- When you first push this button, the last value appears on the setting indicator of the freezer.
- Whenever you press on this button, lower temperature will be set. (-16°C, -18C, -20°C, -22°C, -24°C,)
- If you continue to press, it will restart from -16°C.
- The temperature value selected before Super Freeze Mode is activated will remain the same when the mode is over or cancelled. The appliance continues to operate with this temperature value.



### Recommended Temperature Values for Fridge

When would it be adjusted?	Inner Temperature
For Minimum Freezing Capacity	-16°C
In Normal Usage	-18°C, -20°C, -22°C
For Maximum Freezing Capacity	-24°C, SF

<b>VESTEL</b> WHITE GOODS	<b>2791 ELECTRONIC</b>	<b>CUSTOMER SUPPORT</b>
	<b>Fault Codes</b>	

**Sensor short open circuit defect on display**

SENSOR	TEMPERATURE	USER MODE REACTION	SERVICE MODE REACTION
(1) Freezer	>+50° C or <-50° C (sensor is short or open)	Display ALARM Symbol blinks	-16 Set Symbol blinks
(2) Refrigerator	NA		NA
(3) Defrost	Short (< 100Ω) or <-50° C		-18 Set Symbol blinks
(4) AT sensor	NA		NA
Breakdown of (1) and (2)			NA
Breakdown of (1) and (3)			-16,-18 Set Symbol blinks
Breakdown of (1) and (4)			NA
Breakdown of (2) and (3)			NA
Breakdown of (2) and (4)			NA
Breakdown of (3) and (4)			NA
Breakdown of (2) and (3) and (4)			NA
Breakdown of (1) and (3) and (4)			NA
Breakdown of (1) and (2) and (4)			NA
Breakdown of (1) and (2) and (3)			NA
Breakdown of all sensors			NA

**Component defect on display**

DEFECT TYPE	DETAILS	USER MODE REACTION	SERVICE MODE REACTION
Compressor Defect	D sensor temp >-10° C (D sensor temp. unchanges for 10 min. continuous compressor run)	Display ALARM Symbol blinks	-20 Set Symbol blinks

**Compressor Defect Error on display**

\*\*\*NOTE: To prevent the wrong alarms, this alarm status is disabled on following conditions:

- During the first 6 hours after the product was firstly connected.
- During the defrost period
- During the 30 minutes after a defrost
- During the first 2 hours that if door was open.

<b>VESTEL</b> <b>WHITE GOODS</b>	<b>2791 ELECTRONIC</b>	<b>CUSTOMER SUPPORT</b>
	<b>Service Mode</b>	

**Entering service mode:**

Push SET button continuously for 10 seconds when -24 set symbol active. Appliance will enter service mode 10 sec. later.

**Canceling service mode:**

Push SET button continuously for 10 seconds when -24 set symbol active. Appliance will enter service mode 10 sec. later.

If service man do not push any buttons for 30 minutes when appliance is in service mode.

Service mode will be canceled automatically.

Service mode will be used only by professionals.

**1.Push Starting program**

Push set button 5 second at service mode.

Freezer set value screen light as components are checked.

“-16 set symbol” will light when compressor is ON

“-18 set symbol” will light heater will be ON

“-20 set symbol” will light fan will be ON

**2.Push Forced Defrost and Forced Canceling of Defrost**

-18 set symbol will light during this mode.. Mode can be canceled manually or automatically.

Manual canceling will be done by pushing SET button. Symbol will be OFF if defrost is canceled manually. Appliance will return to initial Service mode reaction.

If manual canceling of this function is not performed in 40 min.

Service mode will be canceled. Appliance will check if defrost is finished in this 40min. If YES, appliance will go on from previous set values. But if defrost is not finished , appliance will go on defrost till it finishes and then go on from previous set values.

<b>VESTEL</b> WHITE GOODS	<b>2791 ELECTRONIC</b>	<b>CUSTOMER          SUPPORT</b>
	<b>ASSEMBLE &amp; DISASSEMBLE</b>	

## Replacement Fin Evap Group

***Warning: Make sure the unit is unplugged.***

- Unscrew the condenser screws. (4 pcs)



- Push the condenser up side and remove.



- Remove the sealing material at the housing.



- Fix the heat exchanger pipe.



<b>VESTEL</b> WHITE GOODS	<b>2791 ELECTRONIC</b>	<b>CUSTOMER          SUPPORT</b>
	<b>ASSEMBLE &amp; DISASSEMBLE</b>	

- Unscrew the 2 screws shown at the picture.



- Remove the flap cover supports left and right.



-Take out the fin evap group.

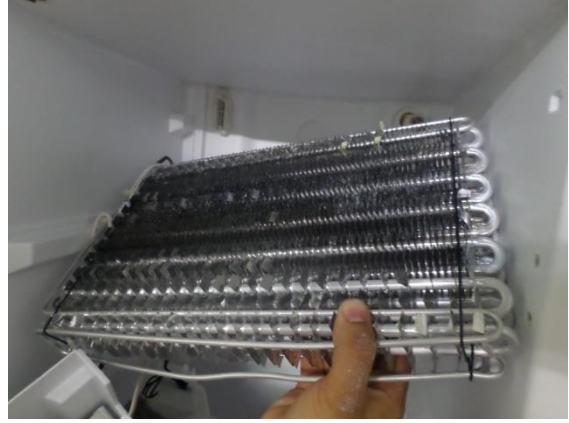


-Remove the fin evap strafoam.

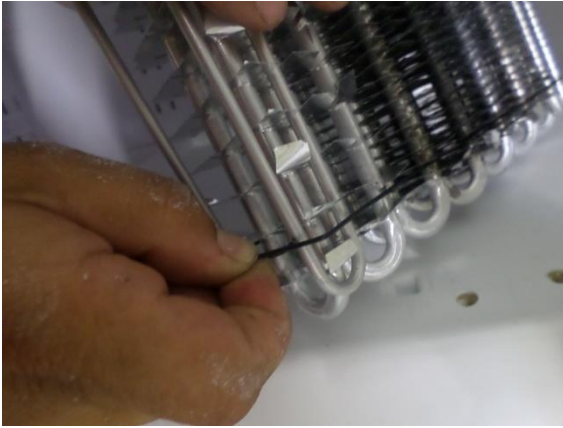


<b>VESTEL</b> WHITE GOODS	<b>2791 ELECTRONIC</b>	<b>CUSTOMER          SUPPORT</b>
	<b>ASSEMBLE &amp; DISASSEMBLE</b>	

-Remove the fin evap box.



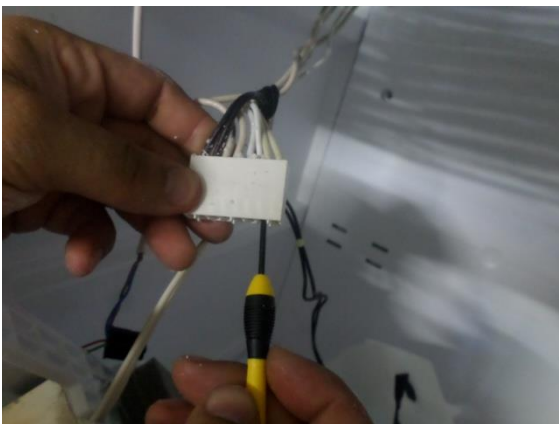
- Remove the black metal clippers.



- Detach the evaporator from the defrost heater.



-Take out the fin evap heater connector.



<b>VESTEL</b> WHITE GOODS	<b>2791 ELECTRONIC</b>	<b>CUSTOMER SUPPORT</b>
	<b>ASSEMBLE &amp; DISASSEMBLE</b>	

## Replacement Head Panel and Main Board

1. First remove cover by pulling leftward as shown below.



2. Remove other cover by pulling backward from top side of the cover as shown below



3. Unscrew screws marked with red circle at the picture below.



<b>VESTEL</b> WHITE GOODS	<b>2791 ELECTRONIC</b>	<b>CUSTOMER          SUPPORT</b>
	<b>ASSEMBLE &amp; DISASSEMBLE</b>	

4. Disassemble snapfits at the area marked with red circle at the picture below . It can be used any suitable tool to disassemble.

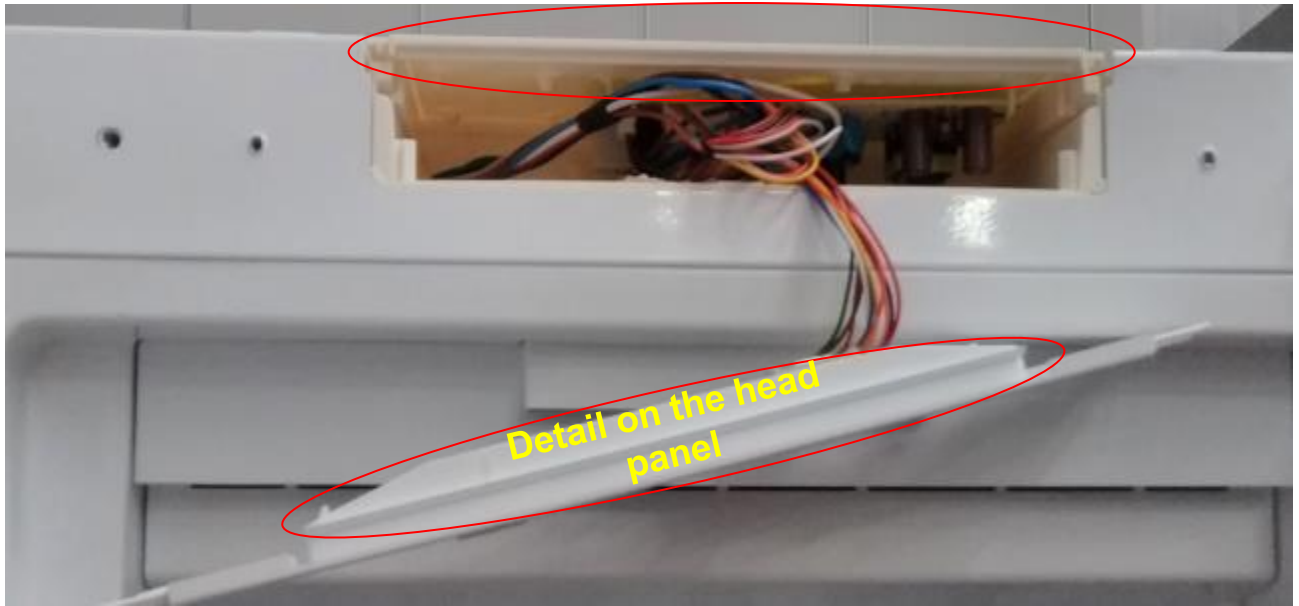
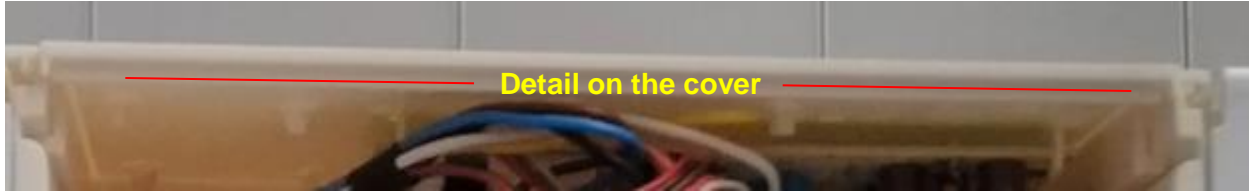


5. Unplug socket on the board assembled head panel.



<b>VESTEL</b> WHITE GOODS	<b>2791 ELECTRONIC</b>	<b>CUSTOMER          SUPPORT</b>
	<b>ASSEMBLE &amp; DISASSEMBLE</b>	

6. To reassemble head panel ; first plug socket mentioned before and then place detail on the head panel to related detail on the cover and then push head panel to place snapfits marked with red circle below.



<b>VESTEL</b> WHITE GOODS	<b>2791 ELECTRONIC</b>	<b>CUSTOMER          SUPPORT</b>
	<b>ASSEMBLE &amp; DISASSEMBLE</b>	

7. Then screw head panel with screwdriver and assemble covers and complete head panel assembly.



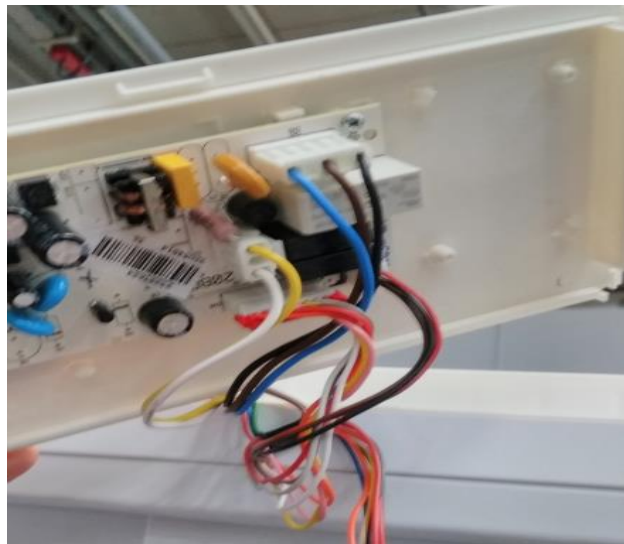
8. Pull cover backward and remove from housing



9. Then unplug all sockets.



10. To reassemble cover first plug all sockets related place on the board.



<b>VESTEL</b> WHITE GOODS	<b>2791 ELECTRONIC</b>	<b>CUSTOMER SUPPORT</b>
	<b>ASSEMBLE &amp; DISASSEMBLE</b>	

11. To reassemble cover pay attention to assemble with right direction. Details on the cover and housing should be matched each other

